

## ALBERT ROAD, WALTHAMSTOW

£3,500 Per Calendar Month  
 4 Bed House - End Terrace



### Features:

- SHORT LET
- Four Double Bedrooms
- Two Receptions
- 1700 Square Feet
- Large Kitchen Diner
- Private Rear Garden
- Tastefully Presented
- All Bills Included

A strikingly finished and impressively spacious four bedroom end terrace, moments from Walthamstow Central and the Village. It's all substantially extended to over 1700 square feet, bursting with vintage features and sleek designer style.

Your end terrace spot and corner plot provide you with plenty of extra peace and quiet, as well as that barely overlooked rear garden, artfully landscaped in a mix of lawn and raised patio, tiled in terrazzo.

REQUEST A VIEWING  
 0203 397 9797

**E11, E7, E12 & E15**  
 hello11@stowbrothers.com  
 0203 397 2222

**E4 & N17**  
 hello4@stowbrothers.com  
 0203 369 6444

**E17 & E10**  
 hello17@stowbrothers.com  
 0203 397 9797

**E18 & IG8**  
 hello18@stowbrothers.com  
 0203 369 1818

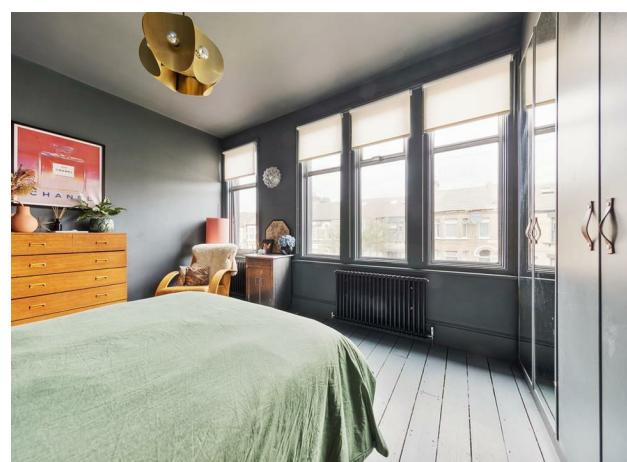
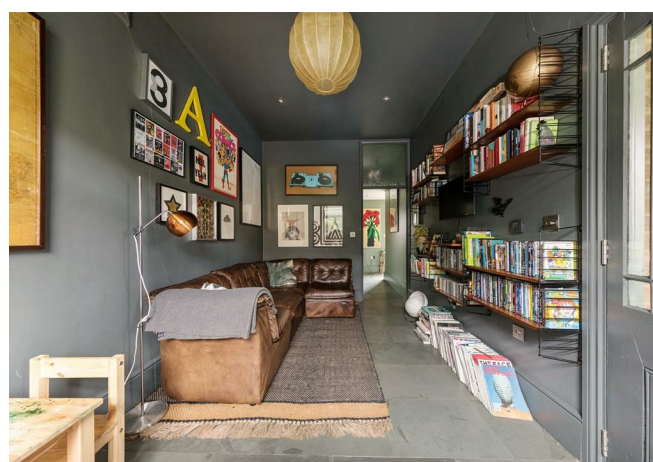
**E8, E9, E5, N16, E3 & E2**  
 hellohackney@stowbrothers.com  
 0208 520 3077

**New Homes**  
 newhomes@stowbrothers.com  
 0203 325 7227

**Investment & Development**  
 id@stowbrothers.com  
 0208 520 6220

**Property Maintenance**  
 propertymanagement@stowbrothers.com  
 0203 325 7228

STOWBROTHERS.COM  
 @STOWBROTHERS



IF YOU LIVED HERE...

You'll be exploring a wealth of sociable space throughout, the first of your twin receptions is a strikingly designed 230 square footer with exposed brick hearth, reclaimed railway sleeper mantel and painted vintage floorboards underfoot. The opposite number comes in at 120 square feet with large format grey floor tiling.

In between, your high end Italian design kitchen/diner offers more than 300 feet of culinary and dining space with a wealth of glossy white cabinets, bespoke catering grade stainless steel, integrated sinks and classic flagstones underfoot. An intricate vintage backsplash sits between underlit cabinets and chunky worktops, with an expanse of exposed brick across the space. Flooded with natural light from the bay window to the front and bi-fold doors to the rear, which can be pulled back in their entirety to completely open the kitchen up to the garden beyond, this is utterly luxurious.

The ground floor's completed by the first of your twin bathrooms, a chic

boutique shower room finished in brass, metro tiling, distressed timber effect paneling and grey slate underfoot. Upstairs, all four bedrooms are substantial doubles ranging from 110 to 170 square feet, every one finished in the style you've come to expect with vintage floorboards, pendulum lighting, floor to ceiling storage and more. Finally your family bathroom gleams in pristine geometrics.

WHAT ELSE?

- Our comprehensive transport hub of Walthamstow Central is just five minutes on foot. From here it's just twenty minutes direct to Liverpool Street and Oxford Circus, putting the City and the West End less than a half hour away. Walthamstow Queen's Road Station is also close-by putting you within easy reach of North and West London.
- Don't forget your cellar, over 300 square feet of extra storage.
- Walthamstow Village, drawing visitors from miles around with its superb array of fine dining and dining establishments, is less than a half mile on foot. Be sure to try out the superb tapas at The Orford Saloon (you can even take home some delicacies from their deli next door).



A WORD FROM THE EXPERT...

"I have worked in Walthamstow for over 10 years, and I still enjoy the buzz in the area. From the scene in Walthamstow Central which offers Collab, Gokyuzu and the Empire cinema. Take a short stroll to the famous William Morris gallery which is located on the popular Lloyd Park surrounded by beautiful green scenery. Walthamstow Village has been a popular trend for me over the years with its bubbly night life and quirky pubs. My personal favourite is The Village Pub. There are four train stations in Walthamstow. Walthamstow Central, Wood Street, Blackhorse Road and Walthamstow Queens Road. I have commuted to and from Central London from Walthamstow Train Station which takes less than 20 minutes so I can see why Walthamstow has the nickname 'awsomestow'".

NICHOLAS PAPI  
LETTINGS BRANCH MANAGER E17

REQUEST A VIEWING  
0203 397 9797

FOLLOW US → @STOWBROTHERS  
STOWBROTHERS.COM



REQUEST A VIEWING  
0203 397 9797

FOLLOW US → @STOWBROTHERS  
STOWBROTHERS.COM



**Reception Room**

22'9" x 10'9"

**Kitchen / Dining Room**

28'0" x 11'7"

**Reception Room**

15'0" x 8'3"

**Shower Room**

**Cellar**

20'10" x 15'10"

**Cellar**

11'9" x 7'4"

**Bedroom**

11'10" x 9'2"

**Bedroom**

15'4" x 11'5"

**Bedroom**

11'6" x 11'5"

**Bathroom**

9'2" x 8'9"

**Bedroom**

15'0" x 8'4"



REQUEST A VIEWING  
0203 397 9797

FOLLOW US → @STOWBROTHERS  
STOWBROTHERS.COM